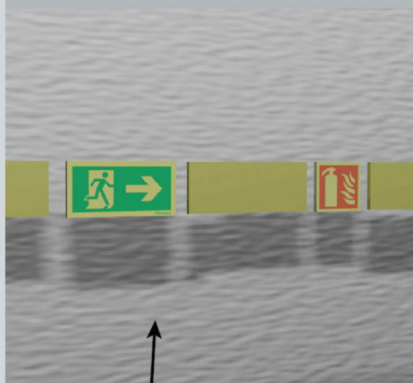


## SIGNS

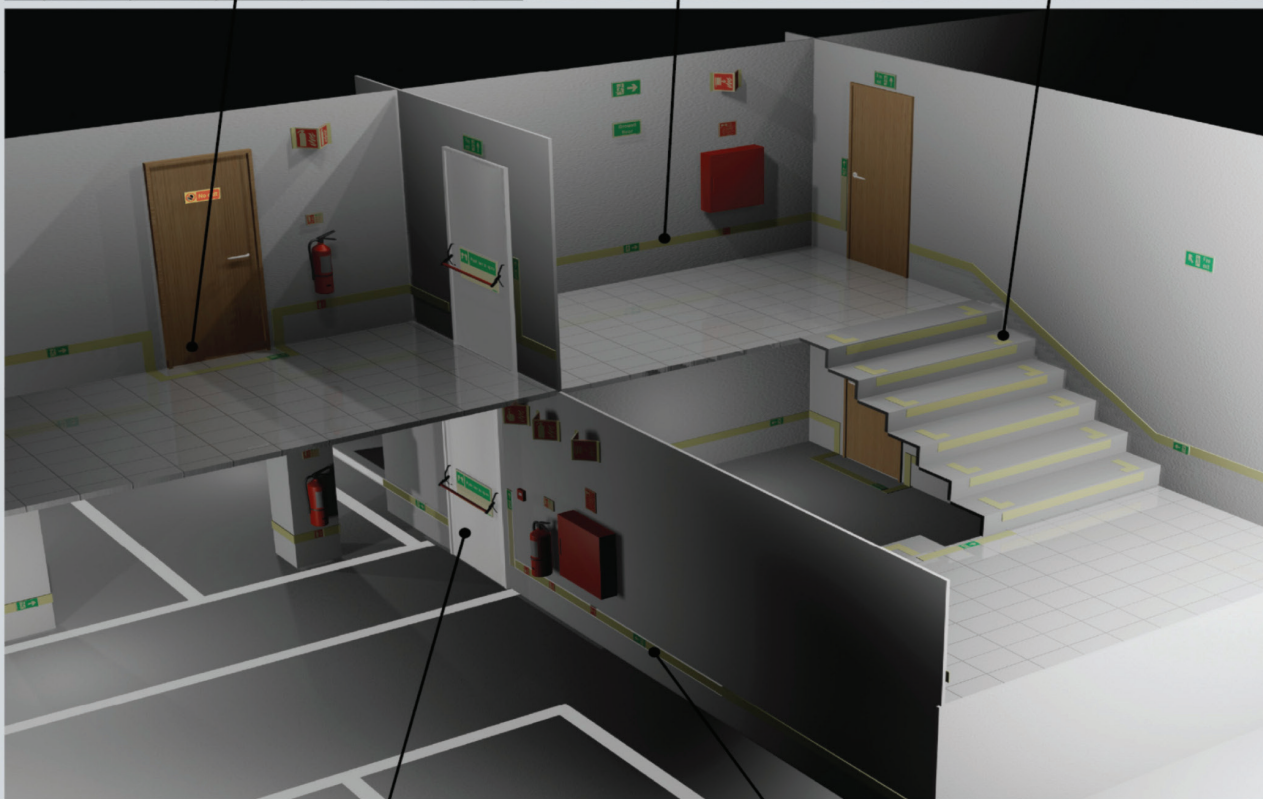
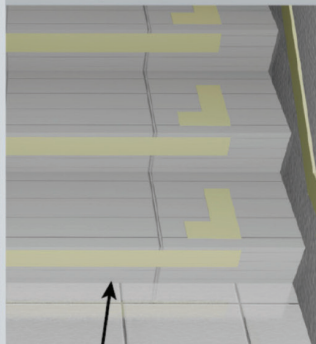
Since the door does not lead to an exit, it should be signed with a rigid-plastic strip on the wall and polycarbonate non-slip strip on the floor.



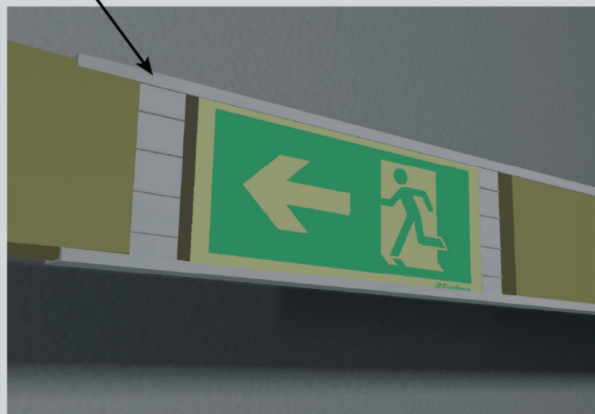
Evacuation and fire extinguisher signs installed between photoluminescent strips to indicate the evacuation route and the location of the equipment.



Stairs signed with rigid-plastic strips on the stair riser of the step and on the wall. The "Ls" on the tread in self-adhesive polycarbonate indicate the edge of the step.



Emergency door (opening on the right hand side) with signs and strips installed on an anti-vandalism aluminium rail.



Exit to the left sign installed between strips on an anti-vandalism aluminium rail to sign the evacuation routes.